

# YFMSCAN [Portable 3D Scanner](#) HSL02

YFMSCAN

Handheld 3D Laser Scanner  
Model No. HSL02



Compared with the traditional structured light route, the handheld laser product has higher precision and stronger anti-interference. In the reverse field, industrial inspection and other fields, it has the characteristics of handheld high precision, which will replace the traditional in this field.

In the product line of laser multi-line 3D scanning system, the self-developed products can be 50-60% more efficient than the peers. Multi-line laser is used to more efficiently establish the coordinate system in the space to generate 3D point cloud data and package it into Grid data can be used for 3D reconstruction in a variety of harsh working environments.

## 1. Handheld 3D laser Scanner HSL02 Features

- \* No afraid of black - Easily repond to black, **reflective objects without the need to spary developer**
- \* Higher cost performance - Guarantee quality and pursure higher cost performance
- \* Multi-line lasr - More efficient creation of coordinate systems within the space to **generate 3D point cloud data, packaged into grid data**
- \* Free scanning - Handheld scanning, light and convenient
- \* Both speed and accuracy - **35000 measurements per second, 0.02mm accuracy**
- \* Lightweight and portable - Quick button direct link software provides multiple shortcuts

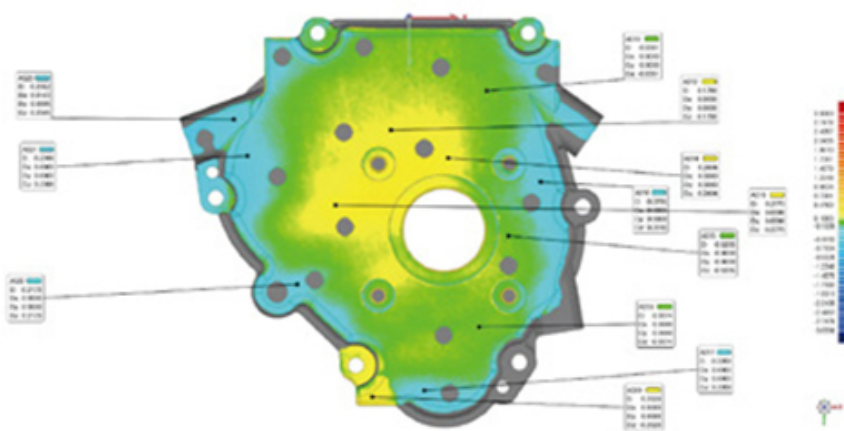
## 2. Application

Applications include cultural relics scanning, crafts scanning, digital model matching, vehicle scanning, accessories scanning, etc.

## Vehicle scanning

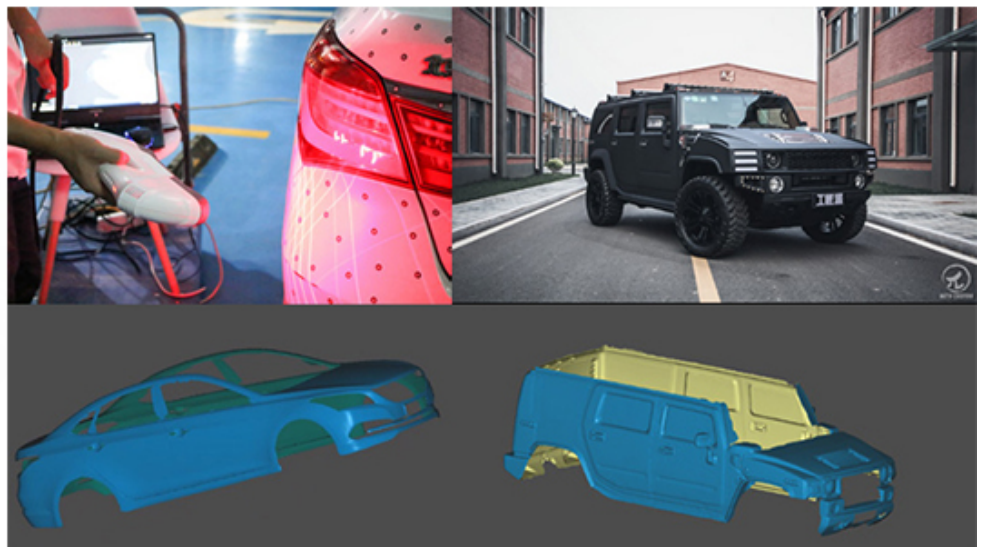


Orthomosaic raster



## Digital model matching

## Vehicle scanning



Orthomosaic raster

### 3. Specification of 3D Scanner HSL02

Weight	2.2lbs/1kg
Dimensions	160*265*50mm
Light source	<b>3 laser crosses and 1 extra line</b>

Laser class	<b>Class II, eye-safe</b>
Scan speed	35000 times/sec
Resolution	<b>0.05mm</b>
Scanning area	<b>250*225mm</b>
Accuracy	<b>0.02mm</b>
Volumetric accuracy	<b>0.02mm+0.06mm/m</b>
Output formats	.ply,.obj,.vtk,.stl,.off,.ma,.txt,..scv,.pn,.pv,.pov... ...(can be customized)