

YFMSCAN [Handheld 3D Laser Scanner](#) HSL01

YFMSCAN

Handheld 3D Laser Scanner

Model No. HSL01



Compared with the traditional structured light route, the handheld laser product has higher precision and stronger anti-interference. In the reverse field, industrial inspection and other fields, it has the characteristics of handheld high precision, which will replace the traditional in this field. factory.

In the product line of laser multi-line 3D scanning system, the self-developed products can be 50-60% more efficient than the peers. Multi-line laser is used to more efficiently establish the coordinate system in the space to generate 3D point cloud data and package it into Grid data can be used for 3D reconstruction in a variety of harsh working environments.

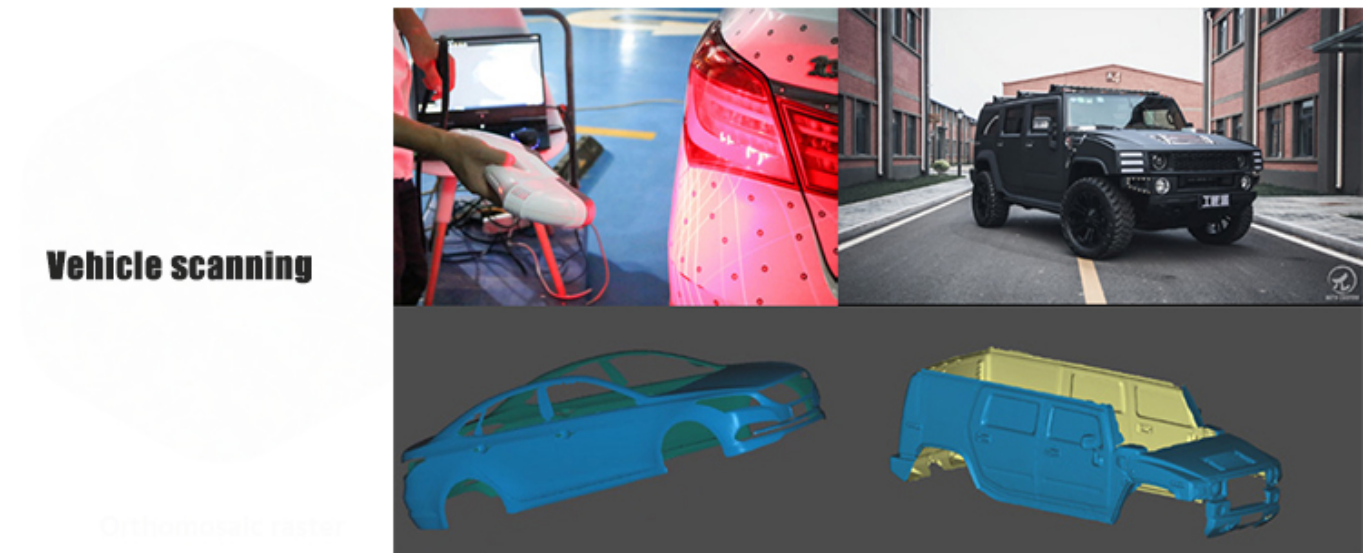
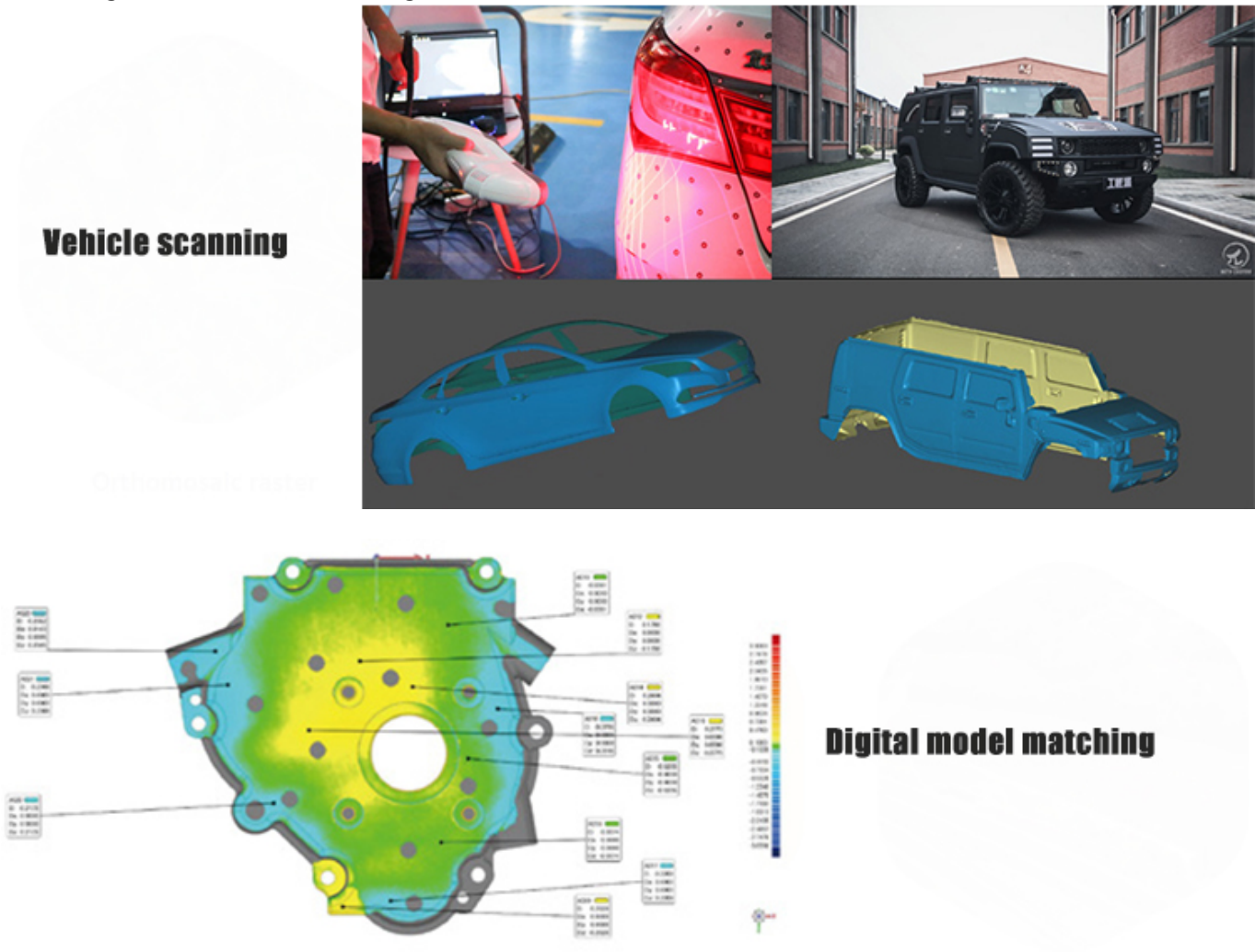
1. Handheld 3D laser Scanner HSL01 Features

- * No afraid of black - Easily repond to black, **reflective objects without the need to spary developer**
- * Higher cost performance - Guarantee quality and pursure higher cost performance
- * Multi-line lasr - More efficient creation of coordinate systems within the space to **generate 3D point cloud data, packaged into grid data**
- * Free scanning - Handheld scanning, light and convenient
- * Both speed and accuracy - **48000 measurements per second, 0.02mm accuracy**
- * Lightweight and portable - Quick button direct link software provides multiple shortcuts

2. Application

Applications include cultural relics scanning, crafts scanning, digital model matching, vehicle

scanning, accessories scanning, etc.



3. Specification of Scanner 3D HSL01

Weight	2.2lbs/1kg
Dimensions	160*265*50mm

Light source	14 laser crosses and 1 extra line
Laser class	Class II, eye-safe
Scan speed	48000 times/sec
Resolution	0.05mm
Scanning area	250*225mm
Accuracy	0.02mm
Volumetric accuracy	0.02mm+0.06mm/m
Output formats	.ply,.obj,.vtk,.stl,.off,.ma,.txt,.scv,.pn,.pv,.pov... ...(can be customized)