

Product Description

RD1100 & RD1500 Underground radar: Innovative tools to find buried utilities

RD1100 It provides location experts, surveyors and other users with the tools they need to track and mark any type of location. Cables and pipes,

Plastic and ceramics. Ability to take standard built-in screenshots and save them internally Memory that allows you to send emails immediately

Export to Wi-Fi or later to a USB memory stick. GPS positioning is obtained for integration into Google Earth™. [Underground radar utility location](#)

RD1500 It takes utility localization to the next level, providing depth slices and traditional line views that are easy for users to interpret. use Unique

Frequency View™ technology highlights small/shallow, medium, or large/deeply buried utilities. Enhance the RD1500 Software to export GPR data and

Perform detailed analysis and use external GPS to improve positional accuracy



High Resolution,
touch screen display

Wi-Fi and USB for transfer
of data. Built-in GPS

External GPS option
for RD1500

Battery

Antenna system
optimised for
location of buried
utilities. RD1500
version includes
FrequenSee™

Odometer



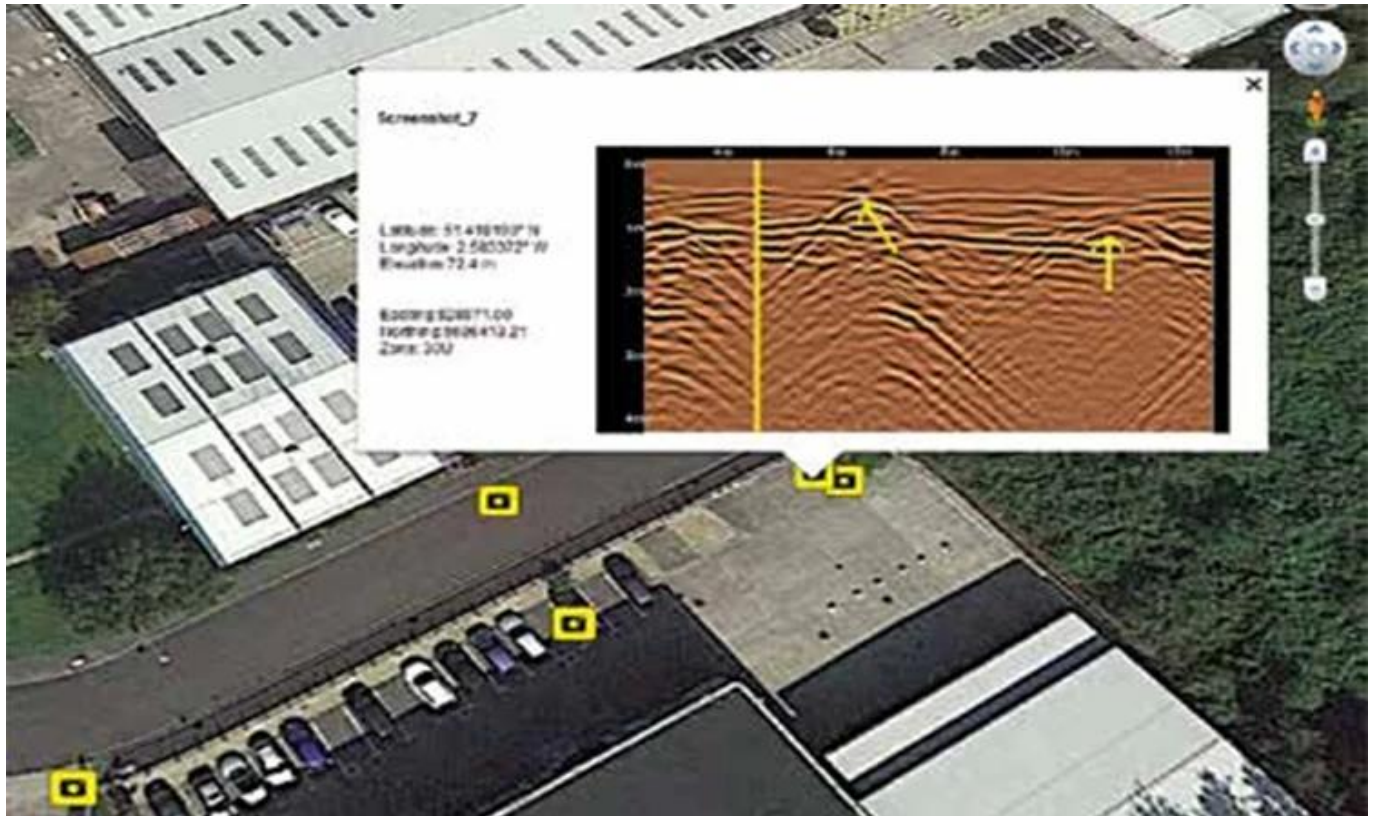
Product Specifications

Specifications

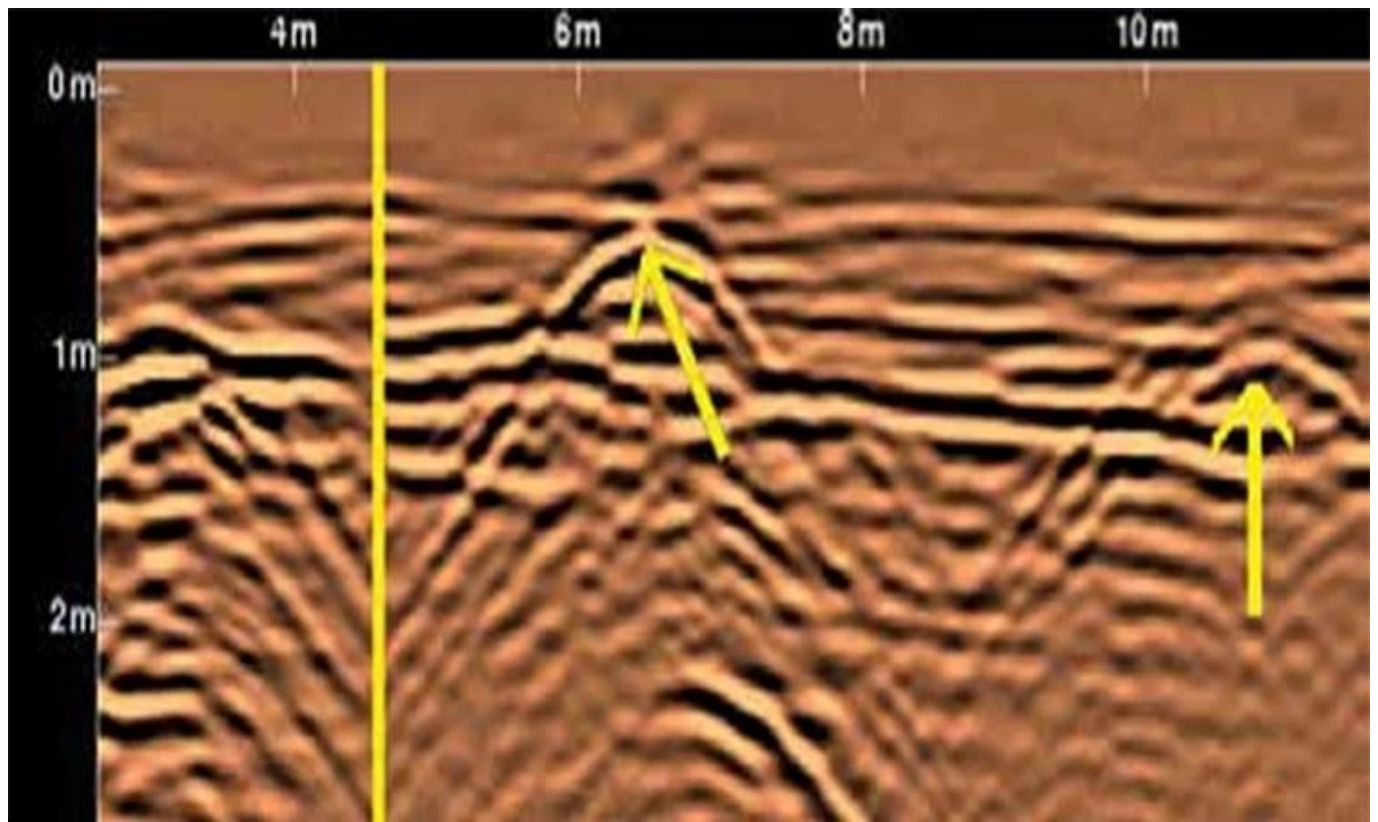
	RD1100 & RD1500	Options and comments
Sensor frequency	250MHz Ultra Wide Band	RD1500: Frequently includedSee
Signal Enhancement	DynaQ (Cart-based data quality optimization) speed). Spatial filtering.	
Data analysis	In field analysis	RD1500: post- Processing analysis EKKO_Project and Utility Suite (optional)
Touch screen display	Size: 21cm diagonal (8 inch)	Strengthened: Upgraded Display package
force	Power consumption: 1.25A at 12V Battery: 12V, 9Ah Lead Acid Battery	Normal battery life 4-6 hours
Space spacing	5cm (2 inches)	
Depth Range	Up to 8m (27 inches)	Ground situation dependence
Display depth scale	1m to 8m (3 inches to 30 inches)	
Supported Languages	Non-verbal icons, English, Spanish, French, German	
Dimensions (H x W x D)	100 x 70 x 115 cm (39.4 x 27.6 x 45.3 inches)	
Weight	22kg (48 lbs)	
Operating temperature range	Display: -10° to 50°C (14°F to 122°F) Sensor: -40°C to 50°C (-40°F to 122°F)	
Protecting the environment compliance	IP65 CE, FCC, ETSI, Industry Canada	

Main features

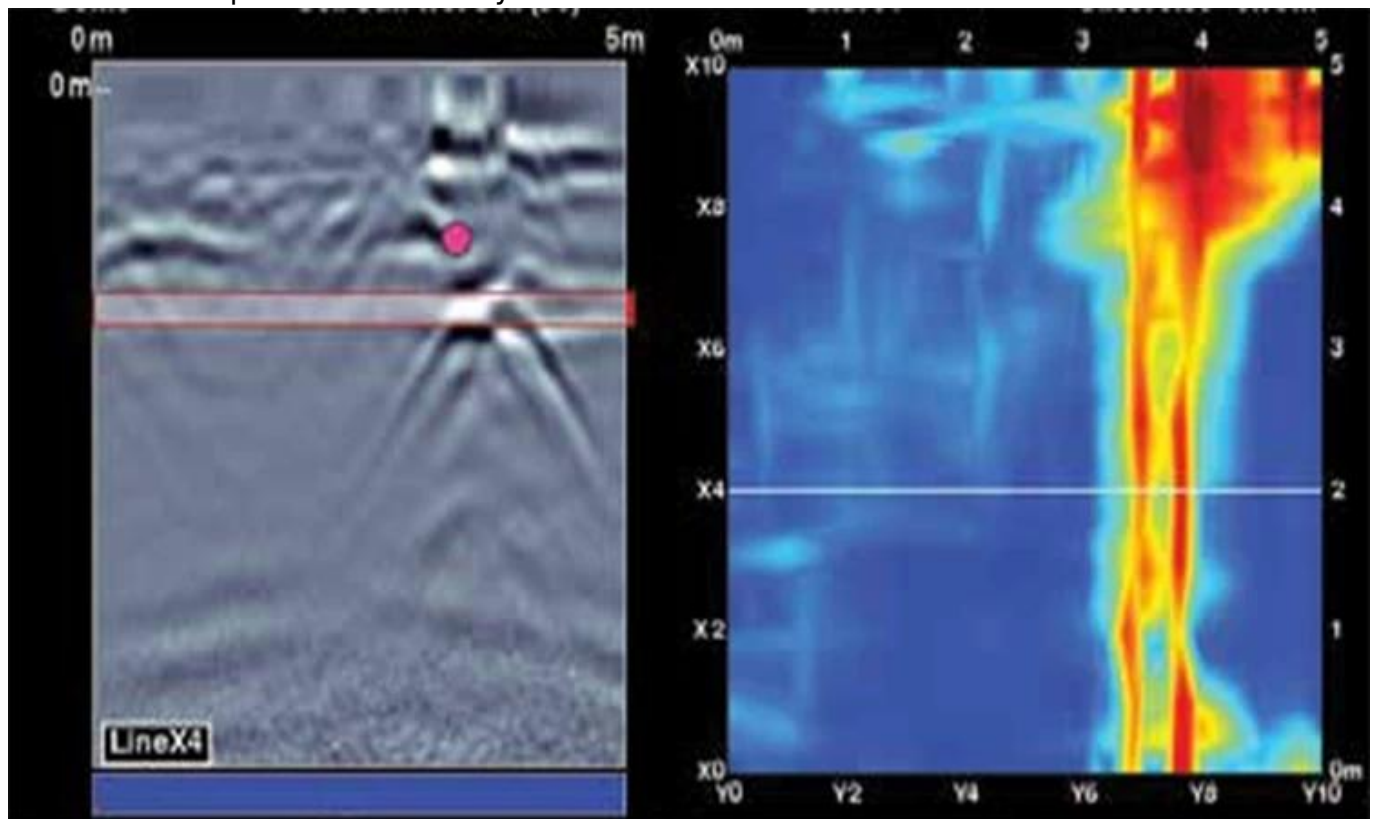
Geographic reference data View the location of your survey in Google Earth™ and other georeference programs.



Screen capture Add markers via the touch screen display to highlight features of interest.

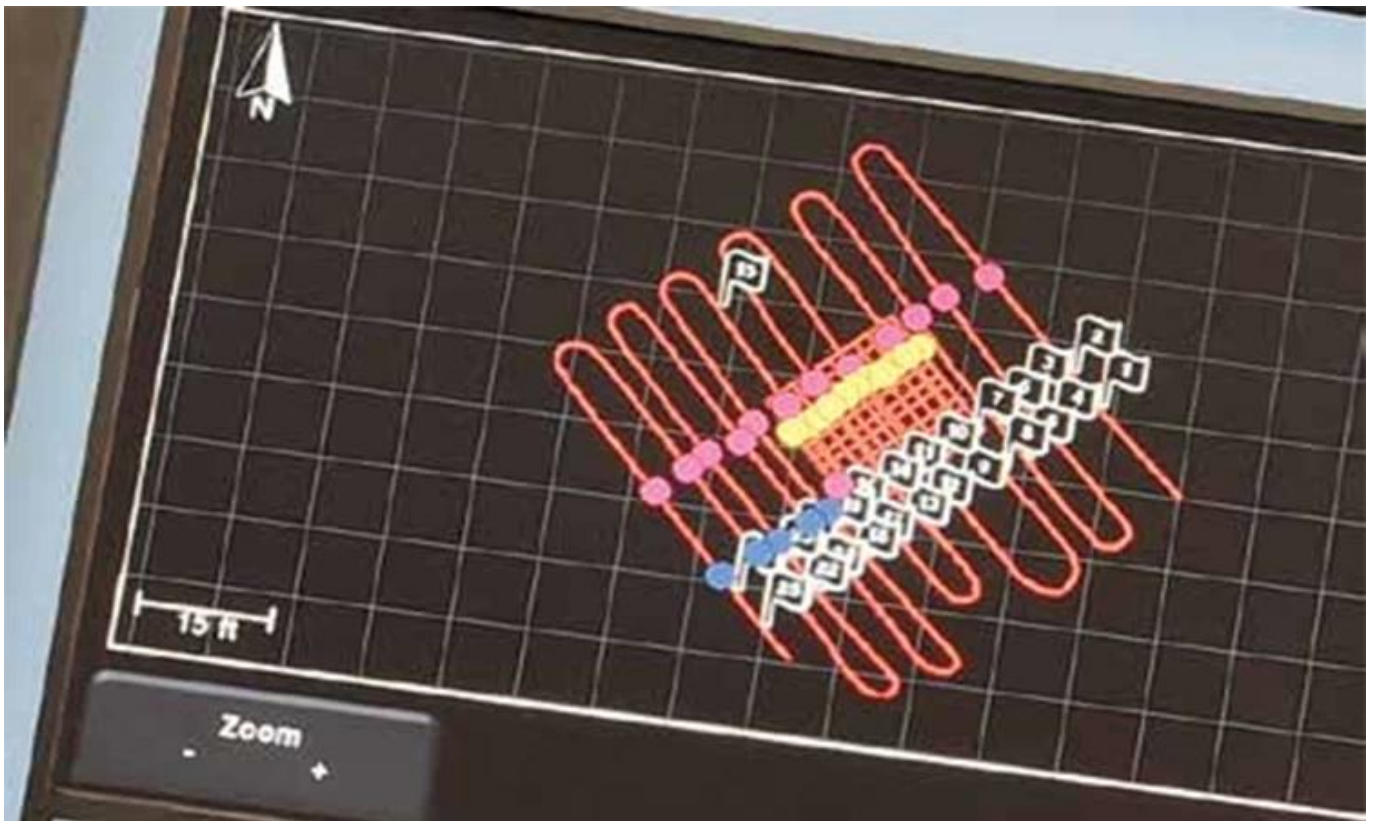


Depth slice (RD1500) View horizontal slices of different depths to show cables and other utilities with unprecedented clarity.





Onsite Map View (RD1500) Use an optional external GPS to display identified features in a plan view.



Our Services



Top quality Radiodetection gpr RD1100/RD1500 ground penetrating radar with on-board wifi

- » Display*1
- » Sensor*1
- » GPR Discharge*1
- » GPR Wheels*4
- » GPR Strap*4
- » GPR Battery & Cable & Charger*1
- » GPR Skid Pad*1
- » GPR Cart*1
- » Handle*1
- » GPR Computer*1
- » GPR Plot*2
- » User Manual*1

[Contact Now](#)



Pre-Sales Services

- *Support for inquiries and consultations..
- * Visit our website.

After-sales service

- *Training on how to install machines and training on how to use machines.
- *We also have engineers who can handle machine repairs overseas.