

Underground mapping GPR Underground radar GS8000

Best in class technology. Powerful 3D software. 100% real time. Perfect for professionals. It's intuitive for everyone.

1. Features

- **Versatility**

Without methodological constraints, scanned underground real-time 2D and 3D data visualizations allow optimal interpretation in the field regardless of application.

- **Accuracy and resolution**

Unique Swiss-made ultra-wideband radar technology and highly accurate geolocation information in local coordinates provide a clear view of data at various depths.

- **User Experience**

End-to-end workflows ranging from the most intuitive data acquisition to instantly shareable deliverables. You can access your data anytime, anywhere.

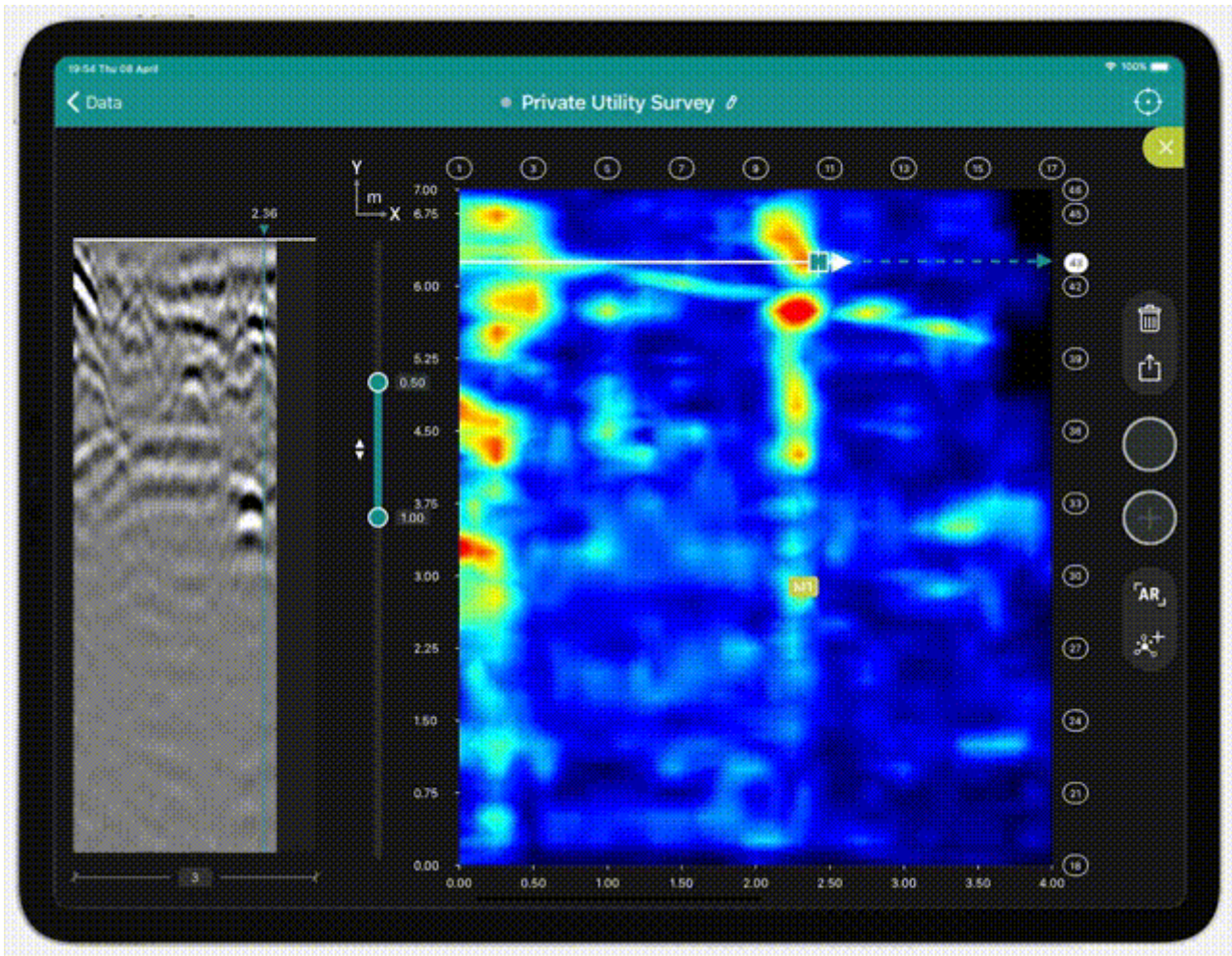
2. Proceq GPR Underground App

- **App version 1**

Key new features introduced with the free upgrade:

- Best image resolution with SFCW GPR data
- Adjust gain to better identify hyperbola in radargrams
- Migrated views to display embedded objects, layers, or defects
- A-Scan and Easy Tagging with User-Defined Targets
- Multilayer dielectric constant for accurate depth
- Grid scan for viewing tomography on the fly
- Time slice view with adjustable depth range
- Augmented reality overlaying time slices

- Real-time GNSS location log for Cm level during scanning
- All data is stored securely and distributed across the cloud, etc.



• App version 2

Key new features introduced with the free upgrade:

- Full flexibility to scan areas without the constraints of following a grid
- Check for 3D tomography that is plotted in real time and updated during scanning.
- Display real-time position on top of satellite image
- Tags and markers are mapped and synchronized with top and cross sections
- Select the local coordinate system of the map from the EPSG database
- Store and categorize geographically located points of interest on a map
- Directly digitize utility diagrams in thyme slice view.
- Export results to general CAD and GIS formats in one click
- Mark up images and share sketches as part of field report
- Connect to a ground positioning system for indoor mapping, etc.

19:54 Thu 08 April

100%

< Data

• Street Crossing

