

RD8100RF

RD8100 ® * Data connection and availability of Google Maps is required.



Dynamic overload protection removes interference and enables it to be used in electrically noisy environments such as substations and overhead power cables. advantage
Designed for field use, it has IP65 intrusion protection against dust and water.

A map to see when and where work was done.

RD Map™ App

Set up, adjust and update locators from your PC - RD Manager PC Software

RD Manager™

Combining accuracy and speed - Peak mode

□□□□□

Accurate surveying with built-in or external GPS

Design accuracy

Customize the locator to suit the network frequency

To further understand how locators work.

RD8100™

The RD8100 cable and pipe locator is combined with the included A-frame to identify and identify defects in the insulating sheath within 4 inches (10cm).

Discovering a breakdown

.

iLOC Remote Transmitter Control Saves Time in the Field

to validate and authenticate locator calibration over the Internet.

□□□□(CD)

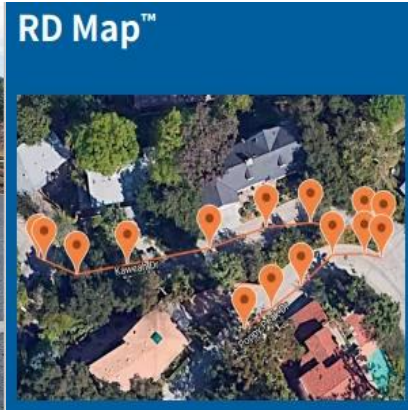
Download usage logs and survey measurement data for analysis, and set up, adjust and update locators from your PC.

GPS

Identify and distinguish power cables using Power Filters™

Shallow Position Warning - Strike Alerts in Active and Passive Position Detection™

Support when you need it



□□ □

□□□□□□□

Tracing 4 kHz high impedance utility (CD support)

®

Usage data can be exported in multiple file formats, including Google's KML.

□□□□□□□□□ - **IP65**

Enhanced self-test

RD8100

Dynamic overload protection helps identify locations in difficult environments

Pipeline Locator

Strike *Alert* RD8100 cable, RF marker,

Strike

Cable and pipe locators

Alert

Durable sealed design - IP65 [RD000000™](#) Quickly follow the line in guidance mode

0000000000

eCert - Certified reliability with no downtime

Precision locator range

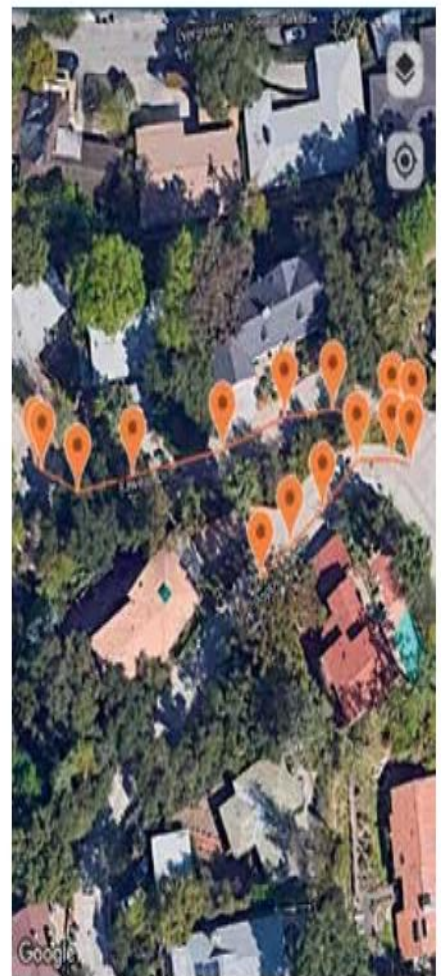
Automatic usage log using GPS positioning

0000000000

Reduce the risk of accidents by alerting the presence of shallow cables and pipes with both visual and audio warnings.

	7100 locators		8100 locators	
	Cable & Pipe	Cable, Pipe & RF Marker	Cable & Pipe	Cable, Pipe & RF Marker
Locate Frequencies	4-7	5-7	16-24	17-25
Active Locate Modes	3-4	4	5	5
RF Utility Marker Frequencies		9		9
Custom Locate Frequencies			✓	✓
Combined Locate Mode †		✓		✓
Sonde Frequencies	0-4	1-4	4	4
Passive Modes	2-3	2-3	2-5	5
On-board GPS	●		●	✓
Power Filters	●	●	✓	✓
Usage-Logging	●	●	●	●
CALSafe™	●	●	●	●
4 kHz for High Impedance Lines			✓	✓
Current Direction			●	●
Fault Find	●	●	●	●
Depth in Power	●	●	●	●
Passive Avoidance			●	●
iLOC			✓	✓
Lithium-Ion Battery	●	✓	●	✓
Bluetooth		✓	✓	✓
3 Year Warranty on Registration*	✓	✓	✓	✓

† Locates marker balls and cables & pipes simultaneously



Create detailed maps of buried utilities in real time. Survey measurement data is added to GPS information to map the route of the tracked utility.

Transmitters	Tx-1	Tx-5(B)	Tx-10(B)
Max. Output Power	1W	5W	10W
Active Frequencies	16	16	16, 36
Induction Frequencies	8	8	8
Current Direction Frequencies			0-14
iLOC Remote Control		●	●
Fault Find		✓	✓
Relative Induction Field Strength	0.7	0.85	1.00
Eco Mode		●	●
Lithium-Ion Battery	●	●	●
3 Year Warranty on Registration*	✓	✓	✓

*Locators and transmitters only. Does not include battery packs and accessories.

Other features described are standard on the RD8100 Locators and Tx transmitters unless otherwise noted.

✓ Available, enabled by default. ● Option. ■ Available, disabled by default.

