

LMX150 Viewfinder GPR

Underground Radar (GPR)



LMX150 Viewfinder GPR :GPR makes it easy to find the location of the utility.

Do you want to avoid a dangerous and costly blow to important utility projects?
Want to find more non-metal utilities in your field?
Are you experiencing problems finding small, small public facilities?
If that's the case, the LMX150TM FINDAR® GPR is the best option.

Our sensors and software LMX150™ FINDAR® is a compact, high-resolution utility location system that meets your localization and mapping needs.

LMX150™ FINDAR® GPR complements traditional pipe and cable locators, allowing you to locate subsurface targets such as:

- ▶ Metal utilities such as pipes and cables
- ▶ Non-metallic pipes containing PVC and asbestos cement
- ▶ Concrete stormwater pipes and sewer systems
- ▶ Utility that failed to install tracer wiring
- ▶ Underground storage tanks and drainage tiles
- ▶ Components of the septic tank system
- ▶ Fiber Optic Cable
- ▶ Non-purpose structures such as safes, foundation walls, concrete pads

Product Information

Lead Acid Gel Cell Battery

- Long-lasting.
- Can be exchanged
- Available locally

High resolution GPR sensor

- Patented Ultra Wideband (UWB) 500MHz GPR Antenna
- Scans for depths up to 3m (10 feet).

Integrated GPS

- Built-in GPS receiver.
- Geographic reference data

Site Report

Immediate production on site
Report from the display unit

Highly visible touchscreen display unit

- Lifetime Free System Software Updates
- User-selectable languages
- Standard and Metric Units in the US

Wifi

- Equipped with Wi-Fi function.

Compact and lightweight fiberglass cart frame

- There are no metal parts that interfere with the GPR signal.
- A sturdy all-terrain cart with integrated odometers that can be easily operated on any road surface.

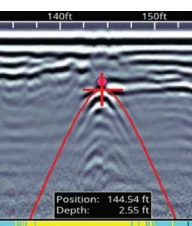
USB

- USB for easy data transfer.

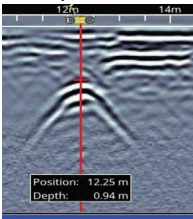
Features

Increase productivity

Easy depth calibration

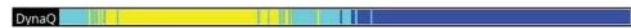


Identify the depth and position accurately



No complicated settings required - just press Start and then click Cart
Use hyperbolic fitting to ensure accurate depth
Measurements and backups to be displayed
Its position and depth.

Dynamic Stacking (DynaQ®)

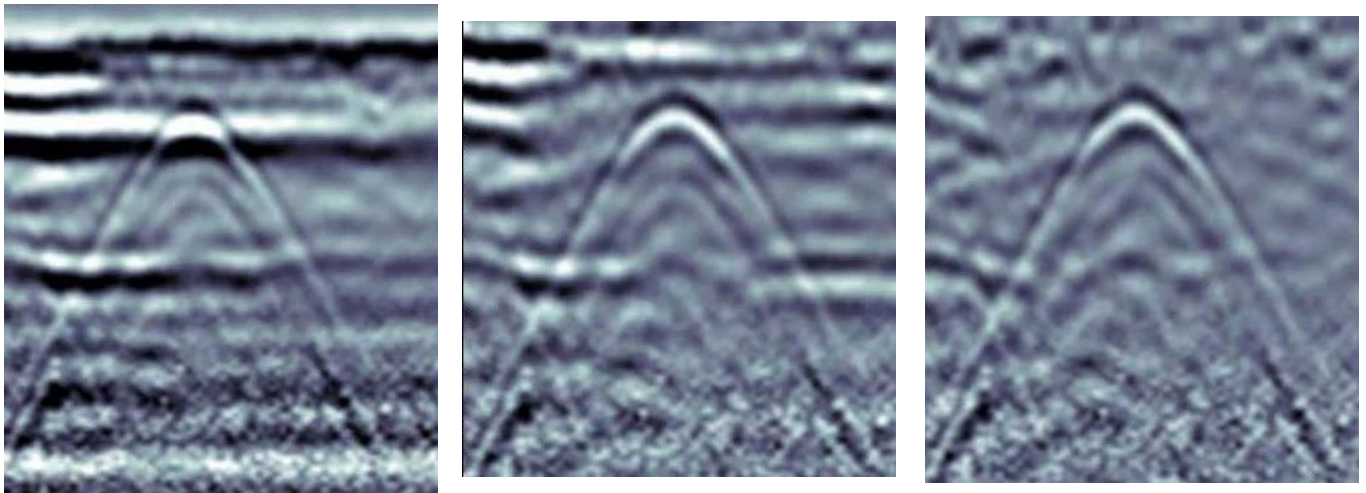


- White = No data (too fast!)
- n Yellow = Moderate quality
- n Light blue = Better quality
- n Dark blue = Highest quality

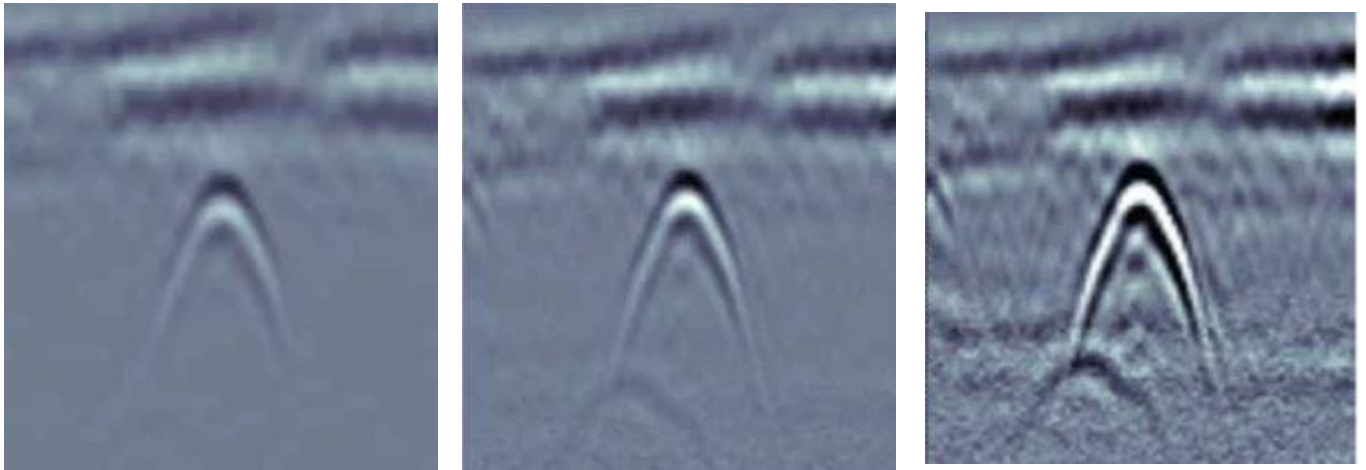
Improve data quality with DynaQ - Automatic adjustments by allies
Stack (averaged) based on the survey speed.

Optimize target visibility in the field

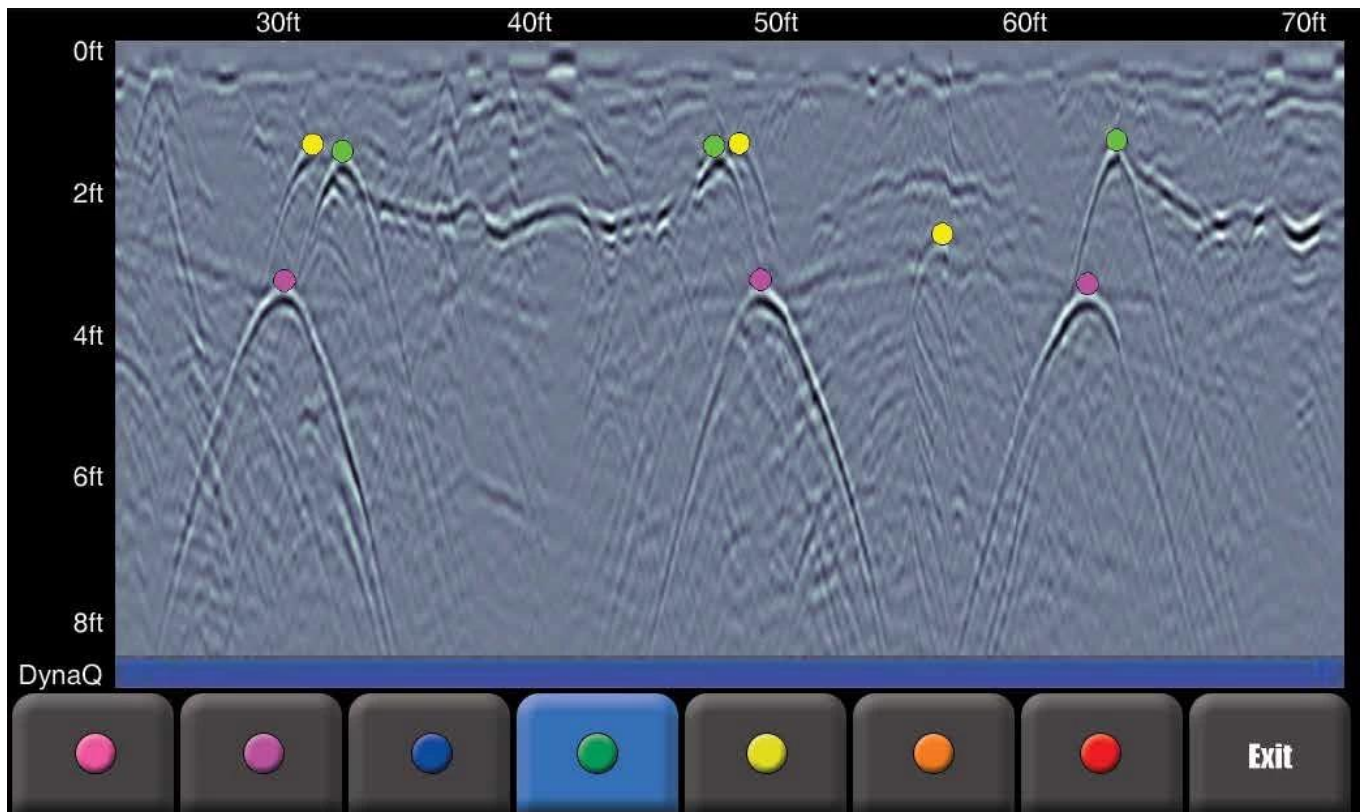
Preset filter



Adjustable gain



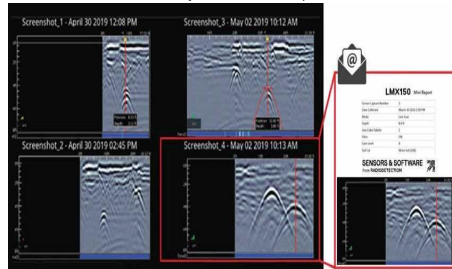
Interpretation of color-coded fields



Classify targets in real time by selecting color options and touching the screen.

Get your deliverables faster

Screenshots in the field Gallery and Wi-Fi Mini Report



Manage and review screenshots and send them via Wi-Fi via email Mini reports from the site.

Geographically tagged information for reports and archives

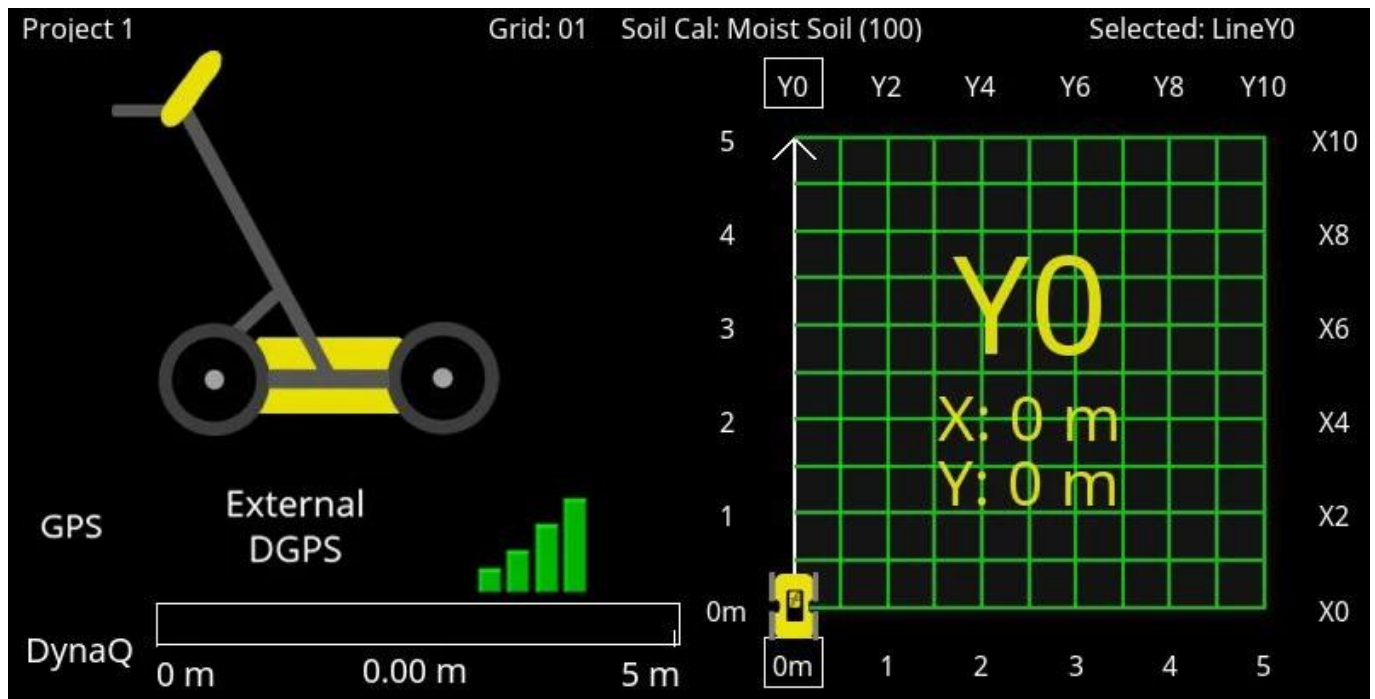


All screenshots will be geographically tagged and exported to KMZ
This file can be easily viewed in Google Earth. "

Complete coverage of complex areas

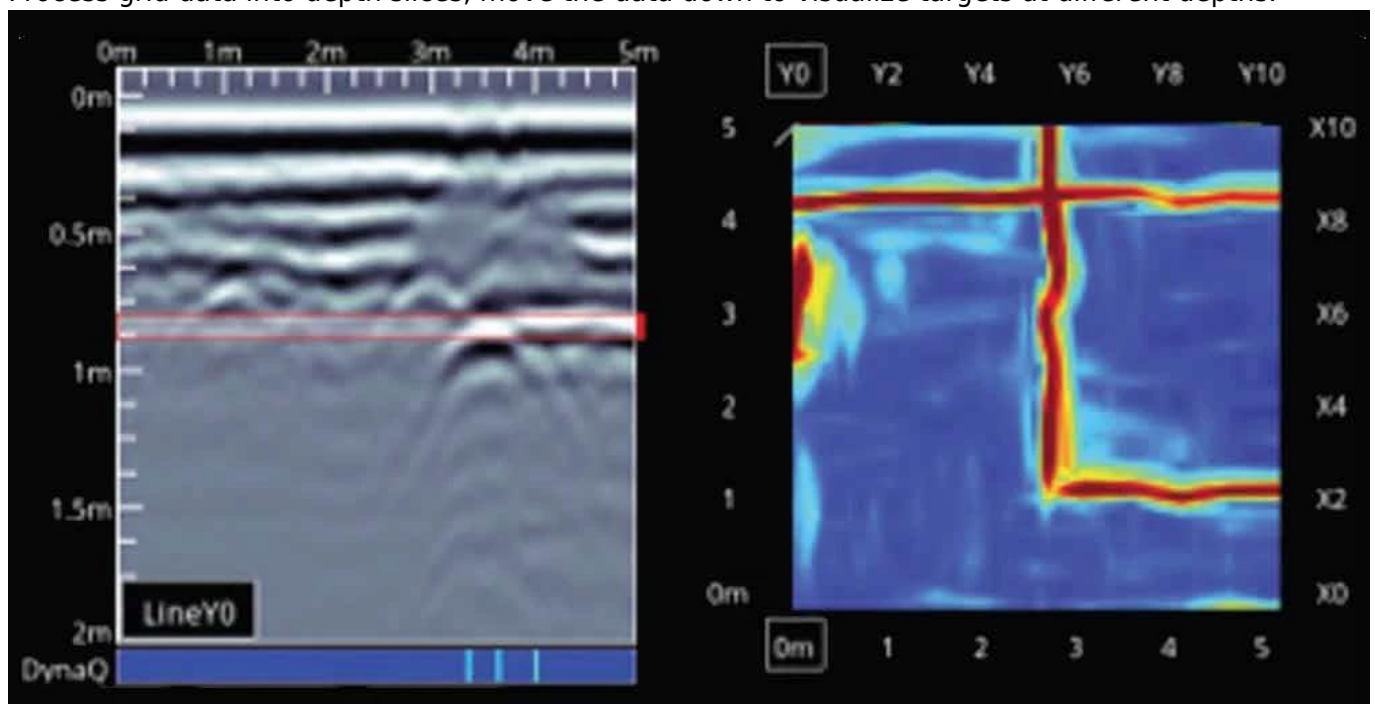
Flexible, guided grid collection

The LMX150" FINDAR" GPR guides the setup using a pre-selected grid size. Stop the line early or skip it.



In-field depth slice

Process grid data into depth slices, move the data down to visualize targets at different depths.



In-field depth slice

Process grid data into depth slices, move the data down to visualize targets at different depths.

