

## Industry Applications

Our products are being used in more than 10 industries with more than hundred types of scanning scenarios, mainly being used in forestry,

mining, material volume measurement, tunnels, geographic information, bridges, slopes, and real estate survey etc.

Heap Metrology

Mine Applications

Ancient Architecture Applications

Forestry Survey

Mine Applications

Engineering Architecture

Building BLM



---

## Supporting Accessories(optional)

Whether it is being used with handheld, head-mounted, extension rod, robotic dog and other ways, it can be easily handled and greatly expanded

into Wide range of application scenarios.

Handheld

Head-Mounted

Backpack

Drone

Robotic Dog

Extension Rod

---

## **GoSLAM lidarWorks**

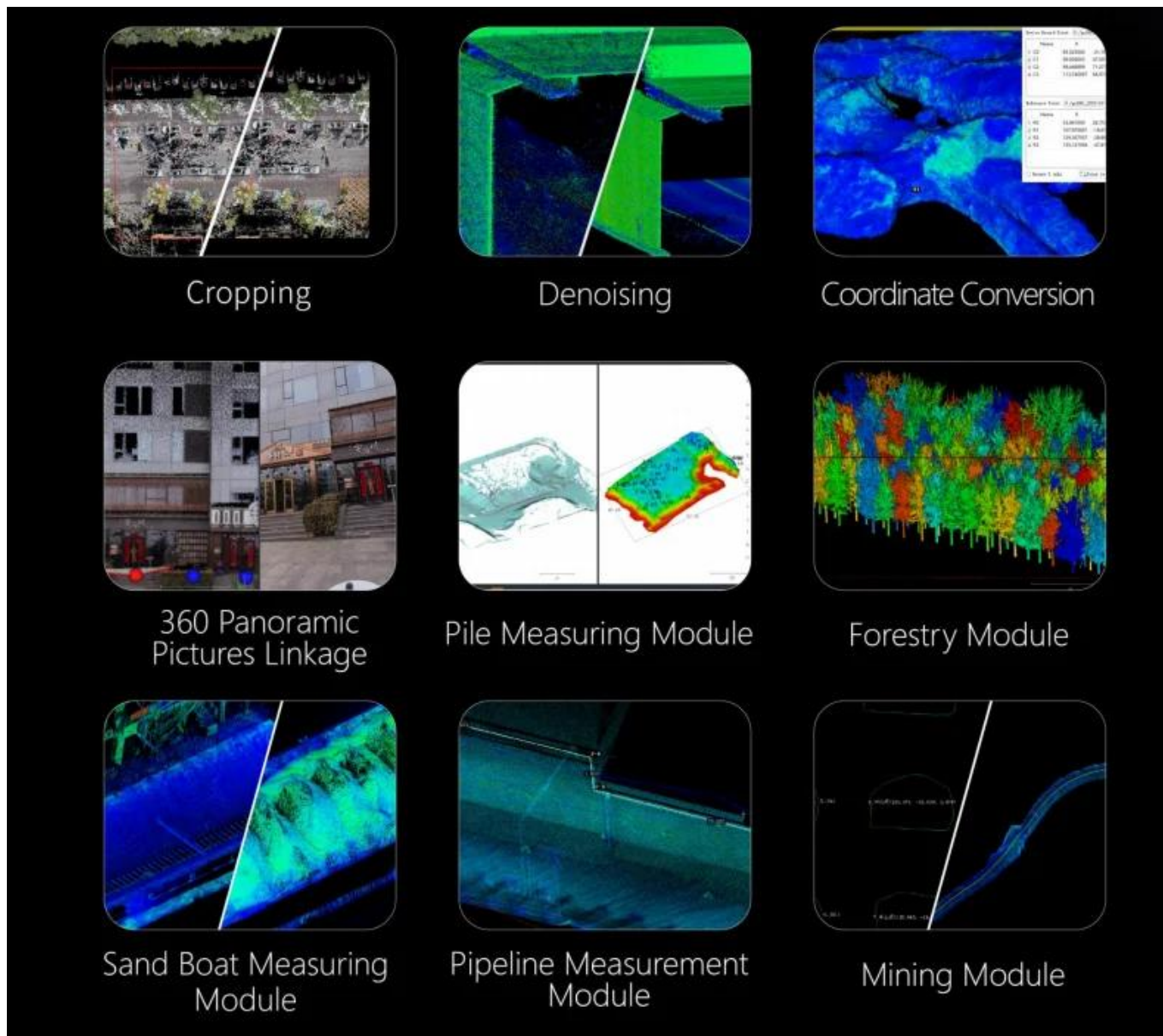
GoSLAM LidarWorks point cloud processing software is a powerful point cloud editing and application software. It supports basic functions such

as massive point cloud browsing, cropping, noise reduction, smoothing, coordinate conversion and stitching. At the same time, it also supports

mesh encapsulation and optimization, linkage between panoramic pictures and point cloud as well as a variety of industry application modules

including forestry module, sand boat measurement module, pipeline measurement module, pile measurement module and mining module. When

processing GoSLAM scanned data, you can also enjoy convenient operations such as automatic recognition of supporting files.



## Product Parameter

M40	
Laser Class	Class I (eYE-Safe)
Visual Slam	5 Million Pixels (Front)
Point Cloud Colorizing	Internal Front Camera, Color Module
Color Module	8K 360 Degree Panoramic Camera (Optional)
Scanning Range	40m(10% Reflectivity) 70m(80% Reflectivity)
FOV	360°×59°
Scanning Speed	200,000 Points/Second
Internal Hard Disk	512G Hard Disk
ExternalThird-Party RTK	Support
Working Time	2.5h(There Is No Panoramic Color Module)
Working Temperature	-35°C~55°C

IP Level	65
Material	Aviation Grade Aluminum
Weight	840g (Excluding Battery)
Size	146x103x269mm